

FULL FLOOR RESIDENCE LEVEL 54

UNIT SQ FT

CONDITIONED SPACE 9870 sf
 5 Bedrooms
 7 Full Bathrooms
 2 Powder rooms

TERRACE 1347 sf

TOTAL: 11217 sf

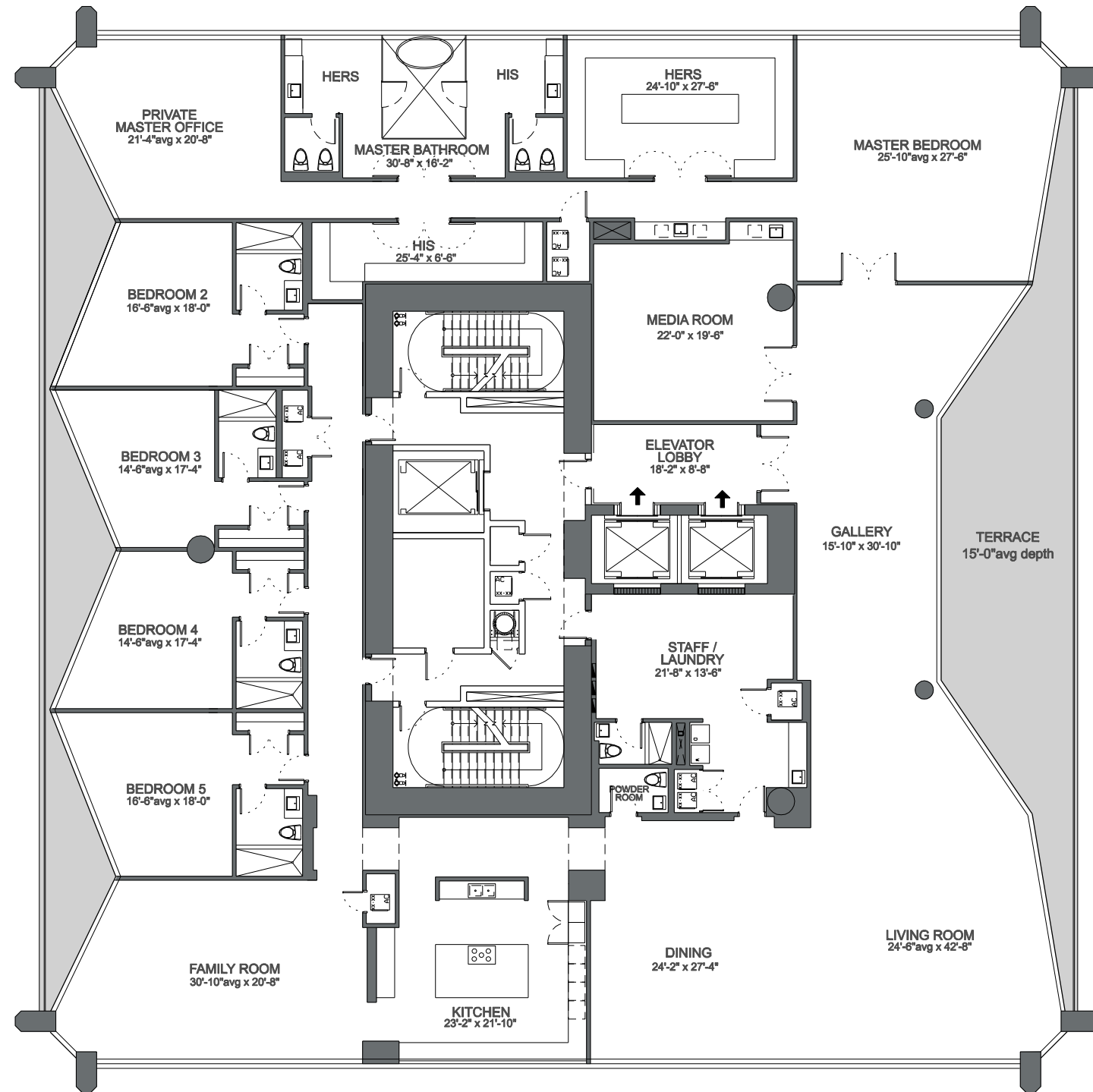
FEATURES

- Ceiling Heights to 12' throughout most areas
- Finished Flooring through-out residence and terraces
- Interior Lighting by Kreon with controls and automation integration by Crestron
- Custom Built in Closets throughout
- Custom Kitchens by Gatto with Appliances by Gaggenau and Sub-Zero
- Midnight Kitchen in Master Suite
- Wet Bar with built-in wine cooler in Living Area
- Plumbing Fixtures by Duravit, Dornbracht & Kohler
- 8' high solid core Designer Doors and Hardware
- Linear Style AC diffusers throughout
- Superior performance floor to ceiling window-wall thermal glazing

DISCLAIMER

Stated dimensions are measured to the exterior boundaries of the exterior walls and the centerline of interior demising walls and in fact vary from the dimensions that would be determined by using the description and definition of the "Unit" set forth in the Declaration (which generally only includes the interior airspace between the perimeter walls and excludes interior structural components). Additionally, measurements of rooms set forth on any floor plan are generally taken at the greatest points of each given room (as if the room were a perfect rectangle), without regard for any cutouts. Accordingly, the area of the actual room will typically be smaller than the product obtained by multiplying the stated length times width. All dimensions are approximate, and all floor plans and development plans are subject to change.

ONE THOUSAND MUSEUM
BY ZAHA HADID



BISCAYNE BAY

